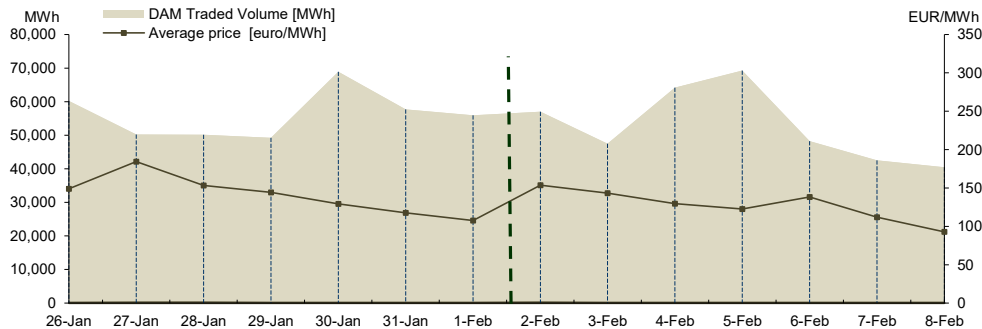


WEEKLY REPORT 02.02.2026 - 08.02.2026

Day Ahead Market

Prices and Volumes

	February 02	February 03	February 04	February 05	February 06	February 07	February 08
Average price ¹ [euro/MWh]	153.79	143.14	129.53	122.61	138.27	111.83	92.81
	January 26	January 27	January 28	January 29	January 30	January 31	February 01
	148.99	184.39	153.46	144.31	129.19	117.46	107.50
Total daily volume traded on DAM [MWh]	February 02	February 03	February 04	February 05	February 06	February 07	February 08
	56,997.1	47,436.2	64,206.7	69,262.6	48,262.2	42,550.8	40,424.6
	January 26	January 27	January 28	January 29	January 30	January 31	February 01
	60,201.8	50,252.5	50,176.0	49,249.4	68,892.6	57,661.8	55,952.6
DAM market share of forecasted consumption ²	February 02	February 03	February 04	February 05	February 06	February 07	February 08
	29.31%	26.22%	42.06%	39.13%	25.98%	24.93%	25.99%
	January 26	January 27	January 28	January 29	January 30	January 31	February 01
	33.66%	26.62%	34.37%	31.80%	43.75%	39.14%	36.99%



Trends

Results**	Week 02.02.2026 - 08.02.2026	Trend related to week 26.01.2026 - 01.02.2026
Average price ³ [euro/MWh]	127.43	↓ -9.47%
Total volume traded on DAM [MWh]	369,140.1	↓ -5.92%
DAM market share of forecasted consumption [%]	30.33%	↓ -13.07%
Selling offers' total volume [MWh]	380,788.0	↓ -4.39%
Buying offers' total volume [MWh]	255,958.3	↑ 8.17%

¹ The arithmetic mean of the prices corresponding to all intervals from a day.

² Represents the final approximation of the net consumption, published by TSO in the trading day that proceeds the delivery day.

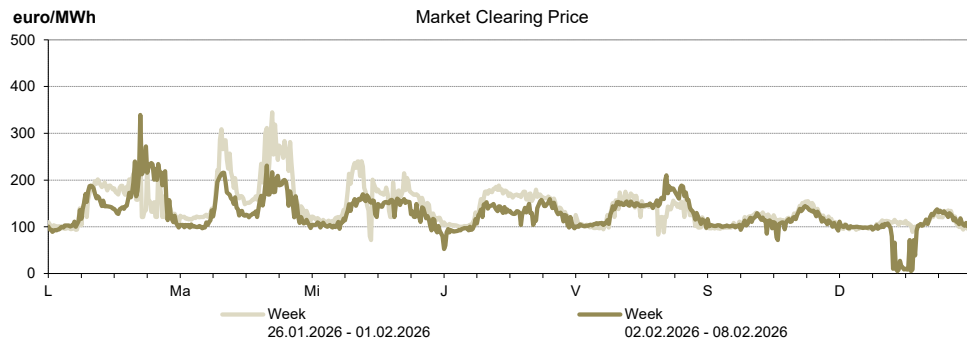
³ The arithmetic mean of the prices corresponding to all intervals from the analysed week.

* Beginning with delivery day November 12, 2014, trading on the DAM is carried out in CET hours.

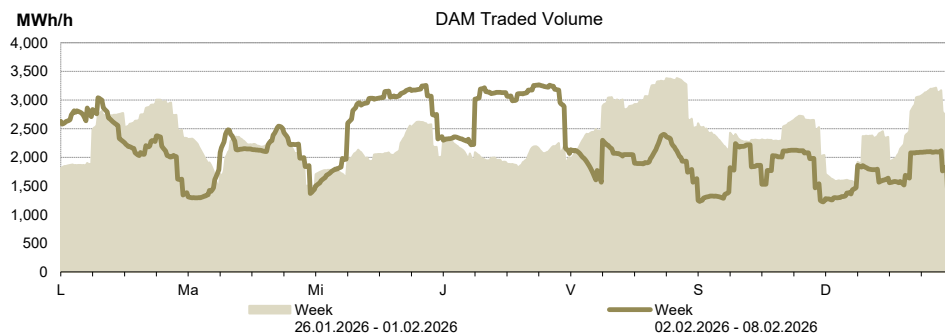
** Beginning with delivery day October 1, 2025, trading on the DAM is carried out at 15-minute granularity.

Results
DAM 15 min *

Price [euro/MWh]	Week 02.02.2026 - 08.02.2026	Trend related to week 26.01.2026 - 01.02.2026
ROPEX_DAM_Base	127.43	↓ -9.47%
ROPEX_DAM_Peak	140.54	↓ -12.49%
ROPEX_DAM_Off_peak	114.31	↓ -5.46%
Max 15min price	339.23	↓ -1.64%
Min 15min price	5.11	↓ -92.86%



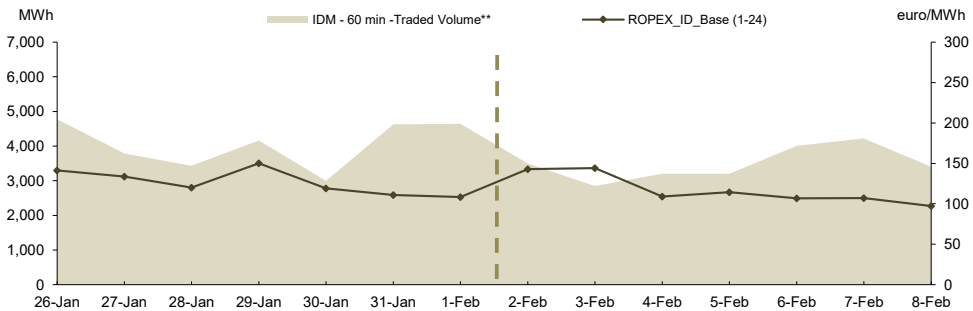
Volume traded on DAM	Week 02.02.2026 - 08.02.2026	Trend related to week 26.01.2026 - 01.02.2026
Base total volume [MWh]	369,140.1	↓ -5.92%
Peak total volume [MWh]	199,921.1	↓ -3.60%
Off-peak total volume [MWh]	169,219.0	↓ -8.52%
Max 15min volume [MW]	3,265.7	↓ -3.44%
Min 15min volume [MW]	1,221.1	↓ -8.14%



Intraday Market

Results IDM - 60 min *

Prices							
ROPEX_ ID_Base (1-24) [euro/MWh]	02 February	03 February	04 February	05 February	06 February	07 February	08 February
	142.86	144.07	109.13	114.51	106.90	107.24	97.27
	26 January	27 January	28 January	29 January	30 January	31 January	01 February
	141.18	133.76	120.05	150.08	119.23	110.91	108.37
Volume							
Sell Hourly Trades [MWh]	02 February	03 February	04 February	05 February	06 February	07 February	08 February
	945.3	601.3	1,946.2	1,318.2	2,023.3	937.7	919.3
	26 January	27 January	28 January	29 January	30 January	31 January	01 February
	767.8	1,741.4	1,821.9	923.4	1,125.6	549.0	999.9
Buy Hourly Trades [MWh]	02 February	03 February	04 February	05 February	06 February	07 February	08 February
	2,719.1	2,312.7	1,444.1	2,080.9	2,126.9	3,389.4	2,552.2
	26 January	27 January	28 January	29 January	30 January	31 January	01 February
	4,153.2	2,225.3	1,824.9	3,437.8	1,989.9	4,135.1	3,777.8
Sell Block Trades [MWh]	02 February	03 February	04 February	05 February	06 February	07 February	08 February
	-	-	-	-	-	-	-
	26 January	27 January	28 January	29 January	30 January	31 January	01 February
	-	-	-	-	-	-	-
Buy Block Trades [MWh]	02 February	03 February	04 February	05 February	06 February	07 February	08 February
	-	-	-	-	-	-	-
	26 January	27 January	28 January	29 January	30 January	31 January	01 February
	-	-	-	-	-	-	-
Share of forecasted consumption							
Share of forecasted consumption [%]	02 February	03 February	04 February	05 February	06 February	07 February	08 February
	1.80%	1.58%	2.10%	1.81%	2.16%	2.47%	2.19%
	26 January	27 January	28 January	29 January	30 January	31 January	01 February
	2.67%	2.01%	2.35%	2.69%	1.90%	3.14%	3.07%

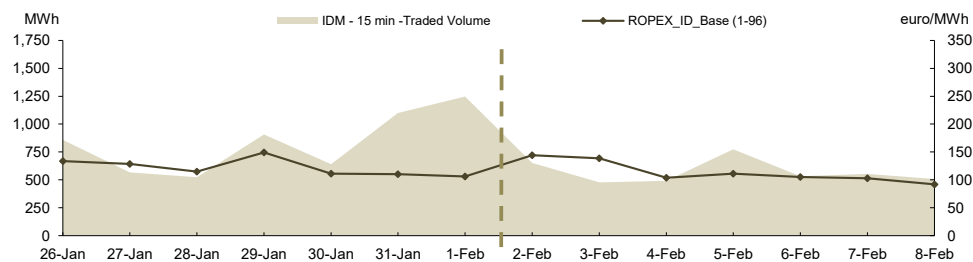


IDM operational from November 12, 2019 according to Order ANRE no 202 / 2019

** traded volume includes both hourly and block trades

Results IDM - 15 min ***

Prices							
ROPEX_ ID_Base (1-96) [euro/MWh]	02 February	03 February	04 February	05 February	06 February	07 February	08 February
	144.18	138.66	103.67	110.95	105.11	102.96	92.02
	26 January	27 January	28 January	29 January	30 January	31 January	01 February
	133.66	128.39	114.83	149.19	111.05	110.44	106.30
Volume							
Sell Trades [MWh]	02 February	03 February	04 February	05 February	06 February	07 February	08 February
	174.9	177.6	250.3	284.3	145.0	186.2	182.5
	26 January	27 January	28 January	29 January	30 January	31 January	01 February
	233.0	209.0	186.2	286.6	330.1	132.8	238.8
Buy Trades [MWh]	02 February	03 February	04 February	05 February	06 February	07 February	08 February
	485.5	305.3	261.9	519.0	397.1	371.6	327.7
	26 January	27 January	28 January	29 January	30 January	31 January	01 February
	644.4	363.1	342.9	632.4	312.6	969.2	1,020.7
Share of forecasted consumption							
Share of forecasted consumption [%]	02 February	03 February	04 February	05 February	06 February	07 February	08 February
	0.34%	0.26%	0.32%	0.44%	0.29%	0.32%	0.33%
	26 January	27 January	28 January	29 January	30 January	31 January	01 February
	0.48%	0.30%	0.36%	0.59%	0.41%	0.75%	0.82%



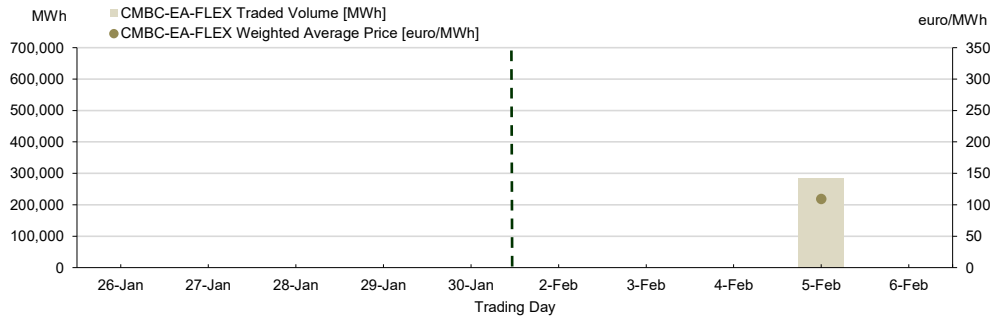
IDM - 15 min - operational from February, 2021 according to Order ANRE no 230/2020

Centralised Market for Electricity Bilateral Contracts Flexible Extended Auctions Mechanism

Results

	February 02	February 03	February 04	February 05	February 06
CMBC-EA-FLEX Weighted Average Price [euro/MWh]	-	-	-	109.02	-
	January 26	January 27	January 28	January 29	January 30
	-	-	-	-	-
	February 02	February 03	February 04	February 05	February 06
CMBC-EA-FLEX Traded Quantity [MWh]	-	-	-	285,120	-
	January 26	January 27	January 28	January 29	January 30
	-	-	-	-	-

Note:  = Non working day

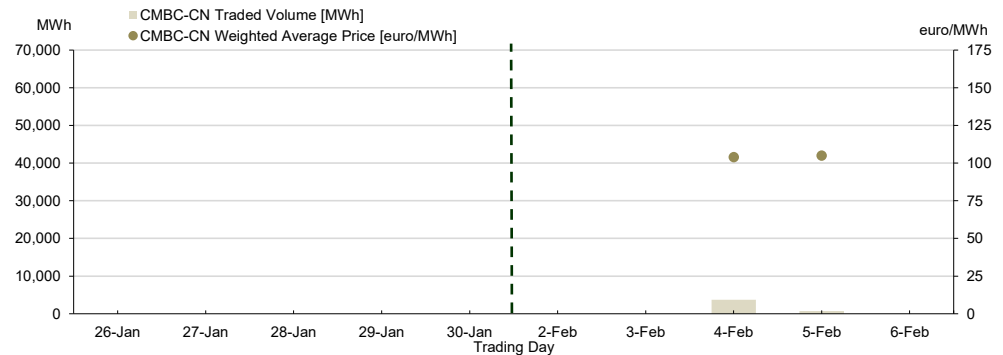


Centralised Market for Electricity Bilateral Contracts Continuous Negotiation Mechanism

Results

	February 02	February 03	February 04	February 05	February 06
CMBC-CN Weighted Average Price [euro/MWh]	-	-	104.04	105.02	-
	January 26	January 27	January 28	January 29	January 30
	-	-	-	-	-
	February 02	February 03	February 04	February 05	February 06
CMBC-CN Traded Quantity [MWh]	-	-	3,715	743	-
	January 26	January 27	January 28	January 29	January 30
	-	-	-	-	-

Note:  = Non working day

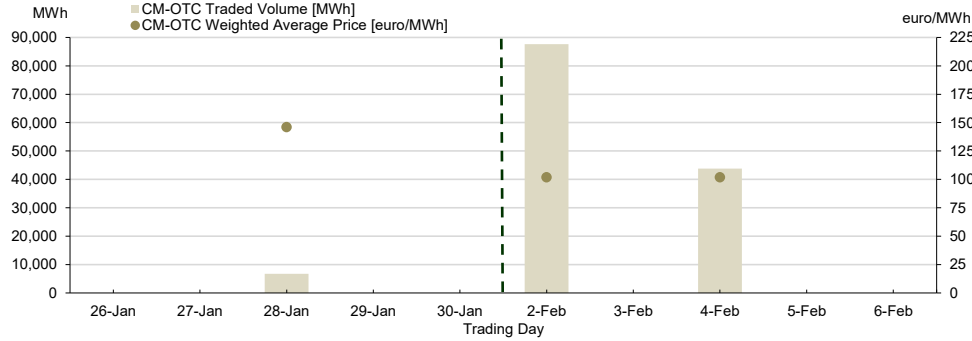


Centralised Market with double continuous negotiation for Electricity Bilateral Contracts

Results

CM-OTC Weighted Average Price [euro/MWh]	February 02	February 03	February 04	February 05	February 06
	102.04	-	102.07	-	-
CM-OTC Traded Quantity [MWh]	January 26	January 27	January 28	January 29	January 30
	-	-	146.19	-	-
CM-OTC Traded Quantity [MWh]	February 02	February 03	February 04	February 05	February 06
	87,600	-	43,800	-	-
CM-OTC Traded Quantity [MWh]	January 26	January 27	January 28	January 29	January 30
	-	-	6,720	-	-

Note:  = Non working day



Electricity market for large consumers

Results LCM

No trades were concluded in the analysed week.

Centralised Market for Universal Service

Results

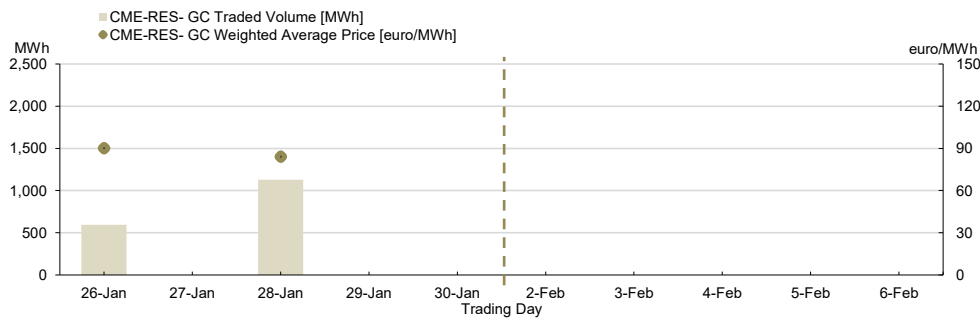
Centralised market for electricity from renewable energy sources supported by green certificates - CME-RES- GC

Results

CME-RES- GC Weighted Average Price [euro/MWh]	02 February	03 February	04 February	05 February	06 February
	-	-	-	-	-
CME-RES- GC Traded Quantity [MWh]	26 January	27 January	28 January	29 January	30 January
	90.27	-	84.18	-	-
CME-RES- GC Traded Quantity [MWh]	02 February	03 February	04 February	05 February	06 February
	-	-	-	-	-
CME-RES- GC Traded Quantity [MWh]	26 January	27 January	28 January	29 January	30 January
	595	-	1,128	-	-
CME-RES- GC Number** of Green Certificates Traded	02 February	03 February	04 February	05 February	06 February
	-	-	-	-	-
CME-RES- GC Number** of Green Certificates Traded	26 January	27 January	28 January	29 January	30 January
	1,785	-	3,384	-	-

Note:  = Non working day

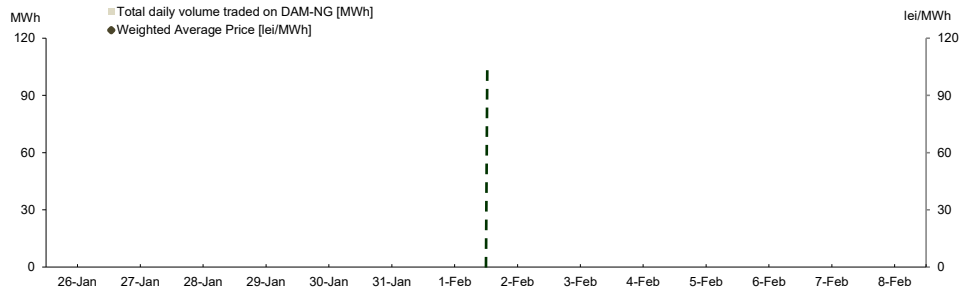
**The information concerning the number of traded GC will be reported to ANRE according to ANRE Order no 195/2019



Day Ahead Market for Natural Gas

Prices and Volumes

Weighted Average Price [lei/MWh]	February 02	February 03	February 04	February 05	February 06	February 07	February 08
	-	-	-	-	-	-	-
	January 26	January 27	January 28	January 29	January 30	January 31	February 01
Total daily volume traded on DAM-NG [MWh]	February 02	February 03	February 04	February 05	February 06	February 07	February 08
	-	-	-	-	-	-	-
	January 26	January 27	January 28	January 29	January 30	January 31	February 01



Trends

Results	Week 02.02.2026 - 08.02.2026	Trend related to week 26.01.2026 - 01.02.2026
Weighted Average Price [lei/MWh]	-	-
Total volume traded on DAM-NG [MWh]:	-	-

Centralised Market for Natural Gas Trading Mechanism PCGN-LN

Weighted Average Price [lei/MWh]	February 02	February 03	February 04	February 05	February 06
	-	-	-	-	-
	January 26	January 27	January 28	January 29	January 30
PCGN-LN Traded Quantity [MWh]	February 02	February 03	February 04	February 05	February 06
	-	-	-	-	-
	January 26	January 27	January 28	January 29	January 30

Note:  = Non working day

