

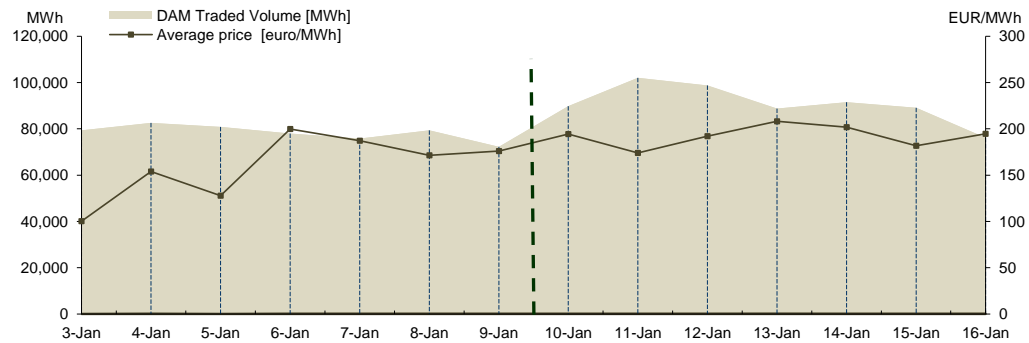
## WEEKLY REPORT 10.01.2022 - 16.01.2022

### Day Ahead Market

#### Prices and Volumes

Average price <sup>1</sup> [euro/MWh]	January 10	January 11	January 12	January 13	January 14	January 15	January 16
	194.37	174.10	192.04	208.20	201.73	181.66	194.65
Total daily volume traded on DAM [MWh]	January 03	January 04	January 05	January 06	January 07	January 08	January 09
	100.26	154.01	127.78	199.90	187.36	171.33	176.11
DAM market share of forecasted consumption <sup>2</sup>	January 10	January 11	January 12	January 13	January 14	January 15	January 16
	89,793.4	102,052.0	98,713.4	88,827.6	91,506.9	89,094.1	76,185.5
	January 03	January 04	January 05	January 06	January 07	January 08	January 09
	79,322.9	82,537.6	80,908.9	77,997.1	75,824.9	79,419.4	72,234.9
	January 10	January 11	January 12	January 13	January 14	January 15	January 16
	50.94%	56.72%	53.39%	47.70%	50.23%	53.07%	48.72%
	January 03	January 04	January 05	January 06	January 07	January 08	January 09
	50.03%	50.91%	49.43%	49.09%	46.19%	50.06%	48.85%

Results\*



#### Trends

Results	Week	Trend related to week	
	10.01.2022 - 16.01.2022	03.01.2022 - 09.01.2022	
Average price <sup>3</sup> [euro/MWh]	192.39	↑	20.60%
Total volume traded on DAM [MWh]	636,172.9	↑	16.04%
DAM market share of forecasted consumption [%]	51.57%	↑	4.77%
Selling offers' total volume [MWh]	645,741.0	↑	16.62%
Buying offers' total volume [MWh]	602,588.4	↑	8.59%

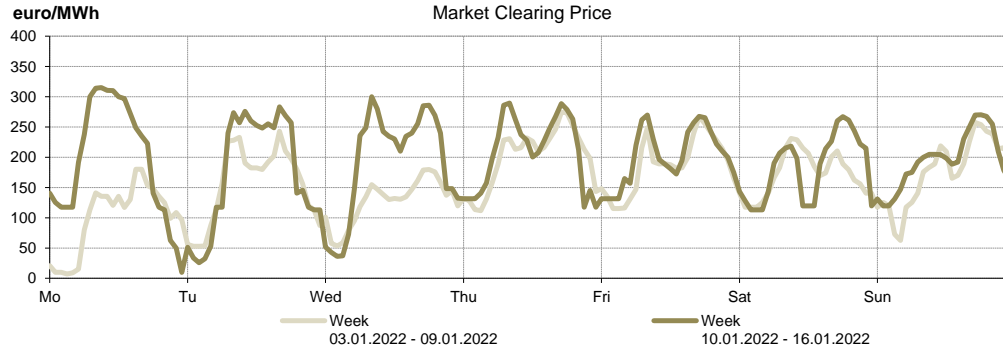
<sup>1</sup> The arithmetic mean of the prices corresponding to all hourly intervals from a day.

<sup>2</sup> Represents the final approximation of the net consumption, published by TSO in the trading day that precedes the delivery day.

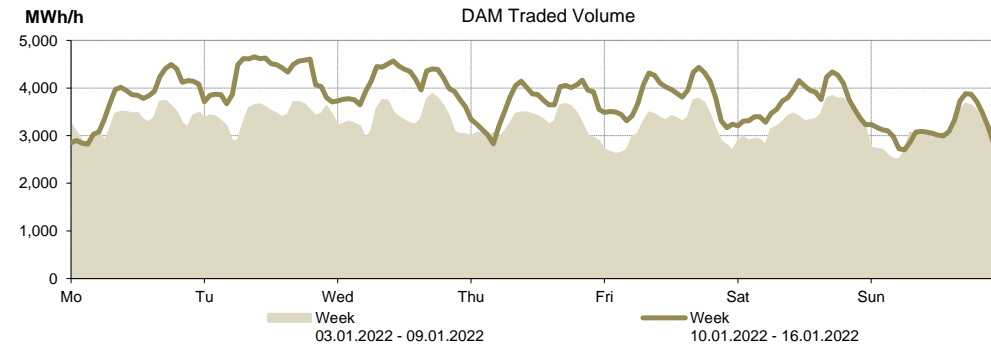
<sup>3</sup> The arithmetic mean of the prices corresponding to all hourly intervals from the analysed week.

\* Beginning with delivery day November 12, 2014, trading on the DAM is carried out in CET hours.

Price [euro/MWh]	Week	
	10.01.2022 - 16.01.2022	Trend related to week 03.01.2022 - 09.01.2022
ROPEX_DAM_Base (1-24)	192.39	↑ 20.60%
ROPEX_DAM_Peak (9-20)	237.63	↑ 23.08%
ROPEX_DAM_Off_peak (1-8) & (21-24)	147.16	↑ 16.79%
Max hourly price	315.00	↑ 14.92%
Min hourly price	9.71	↑ 37.34%



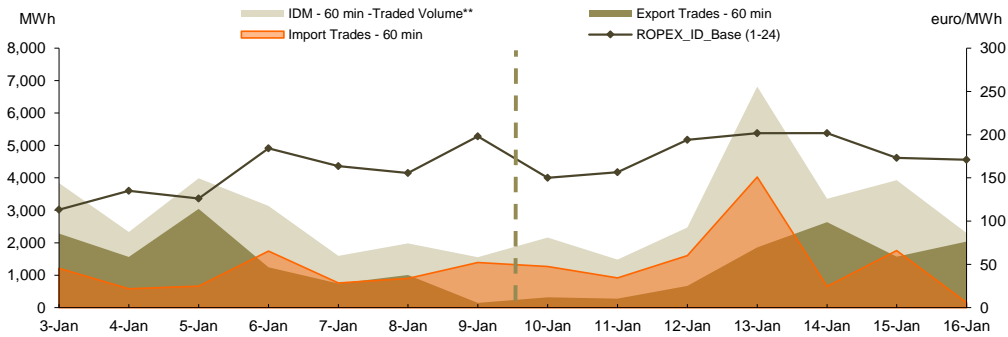
Volume traded on DAM	Week	
	10.01.2022 - 16.01.2022	Trend related to week 03.01.2022 - 09.01.2022
Base total volume (1-24) [MWh]	636,172.9	↑ 16.04%
Peak total volume (9-20) [MWh]	340,377.5	↑ 16.89%
Off-peak total volume (1-8) & (21-24) [MWh]	295,795.4	↑ 15.07%
Max hourly volume [MWh/h]	4,654.5	↑ 20.04%
Min hourly volume [MWh/h]	2,701.6	↑ 8.17%



**Intraday Market**

<b>Prices</b>							
	10 January	11 January	12 January	13 January	14 January	15 January	16 January
ROPEX_ID_Base (1-24) [euro/MWh]	150.24	156.70	194.12	201.59	201.77	173.28	170.98
	03 January	04 January	05 January	06 January	07 January	08 January	09 January
	113.24	135.00	126.05	184.14	163.57	155.77	197.88
<b>Volume</b>							
Sell Hourly Trades [MWh]	10 January	11 January	12 January	13 January	14 January	15 January	16 January
	888.1	564.2	866.1	2,788.1	2,700.2	2,170.2	2,141.2
	03 January	04 January	05 January	06 January	07 January	08 January	09 January
	2,625.1	1,748.8	3,326.2	1,392.3	842.1	1,085.1	164.4
Buy Hourly Trades [MWh]	10 January	11 January	12 January	13 January	14 January	15 January	16 January
	1,840.5	1,206.7	1,802.8	4,960.5	718.7	2,360.1	258.0
	03 January	04 January	05 January	06 January	07 January	08 January	09 January
	1,550.5	764.6	940.2	1,893.0	853.8	972.7	1,407.3
Sell Block Trades [MWh]	10 January	11 January	12 January	13 January	14 January	15 January	16 January
	-	-	-	-	-	-	-
	03 January	04 January	05 January	06 January	07 January	08 January	09 January
	-	-	-	-	-	-	-
Buy Block Trades [MWh]	10 January	11 January	12 January	13 January	14 January	15 January	16 January
	-	-	-	-	-	-	-
	03 January	04 January	05 January	06 January	07 January	08 January	09 January
	-	-	-	-	-	-	-
<b>Cross-Border Trades</b>							
Import Trades [MWh]	10 January	11 January	12 January	13 January	14 January	15 January	16 January
	1,269.7	914.8	1,605.4	4,027.1	653.5	1,759.1	155.5
	03 January	04 January	05 January	06 January	07 January	08 January	09 January
	1,212.4	579.8	658.0	1,744.7	756.0	894.7	1,387.2
Export Trades [MWh]	10 January	11 January	12 January	13 January	14 January	15 January	16 January
	317.3	272.3	668.7	1,854.7	2,635.0	1,569.2	2,038.7
	03 January	04 January	05 January	06 January	07 January	08 January	09 January
	2,287.0	1,564.0	3,044.0	1,244.0	744.3	1,007.1	144.3
<b>Share of forecasted consumption</b>							
Share of forecasted consumption [%]	10 January	11 January	12 January	13 January	14 January	15 January	16 January
	1.22%	0.82%	1.34%	3.66%	1.84%	2.34%	1.47%
	03 January	04 January	05 January	06 January	07 January	08 January	09 January
	2.42%	1.44%	2.43%	1.97%	0.97%	1.25%	1.05%

Results  
PI - 60 min \*

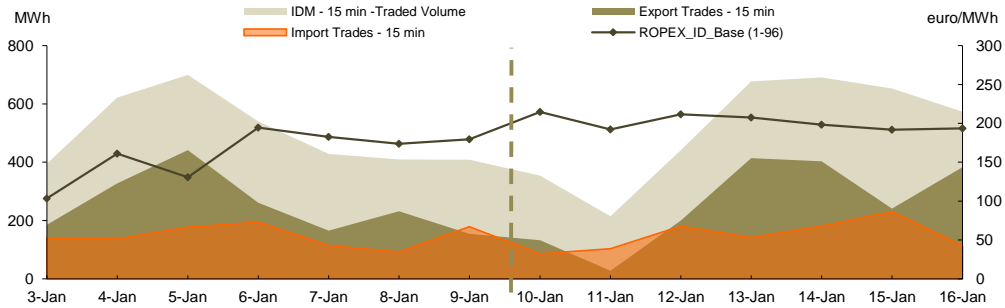


\* IDM operational from November 12, 2019 according to Order ANRE no 202 / 2019

\*\* traded volume includes both hourly and block trades

Results  
PI - 15 min \*\*\*

Prices							
	10 January	11 January	12 January	13 January	14 January	15 January	16 January
ROPEX_ID_Base (1-96) [euro/MWh]	214.65	192.18	211.50	207.46	198.21	191.91	193.55
	03 January	04 January	05 January	06 January	07 January	08 January	09 January
	103.47	161.23	130.53	194.43	182.70	173.74	179.67
Volume							
	10 January	11 January	12 January	13 January	14 January	15 January	16 January
Sell Trades [MWh]	267.9	111.4	261.1	535.7	510.3	421.7	459.4
	03 January	04 January	05 January	06 January	07 January	08 January	09 January
	255.3	485.2	522.6	344.6	314.4	316.5	229.8
Buy Trades [MWh]	221.5	186.5	241.5	263.3	287.9	411.0	190.7
	03 January	04 January	05 January	06 January	07 January	08 January	09 January
	209.4	294.3	258.0	278.9	263.4	177.6	254.6
Cross-Border Trades							
	10 January	11 January	12 January	13 January	14 January	15 January	16 January
Import Trades [MWh]	86.4	103.1	180.5	141.9	180.5	230.6	114.3
	03 January	04 January	05 January	06 January	07 January	08 January	09 January
	139.9	136.9	176.9	195.0	114.7	92.9	179.2
Export Trades [MWh]	132.8	28.0	200.1	414.3	402.9	241.3	383.0
	03 January	04 January	05 January	06 January	07 January	08 January	09 January
	185.9	327.8	441.5	260.6	165.7	231.7	154.3
Share of forecasted consumption							
	10 January	11 January	12 January	13 January	14 January	15 January	16 January
Share of forecasted consumption [%]	0.20%	0.12%	0.24%	0.36%	0.38%	0.39%	0.37%
	03 January	04 January	05 January	06 January	07 January	08 January	09 January
	0.25%	0.38%	0.43%	0.34%	0.26%	0.26%	0.28%



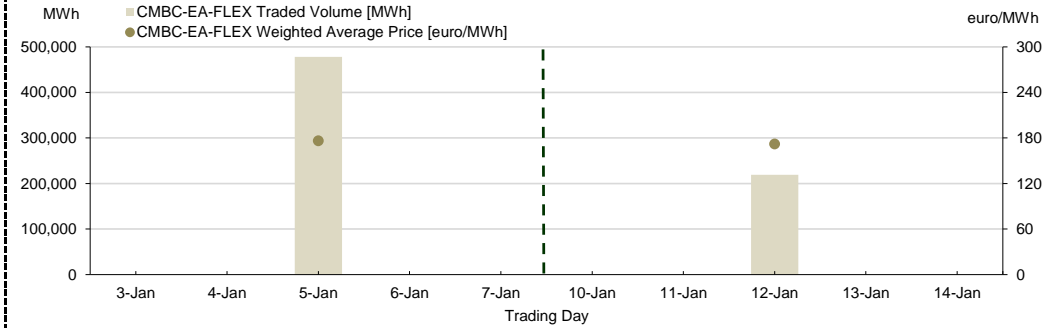
\*\*\* PI - 15 min - operațională începând cu data de 01.02.2021 conform Ordinului ANRE nr. 230/16.12.2020

**Centralised Market for Electricity Bilateral Contracts  
Flexible Extended Auctions Mechanism**

CMBC-EA-FLEX Weighted Average Price [euro/MWh]	January 10	January 11	January 12	January 13	January 14
	-	-	-	172.19	-
CMBC-EA-FLEX Traded Quantity [MWh]	January 03	January 04	January 05	January 06	January 07
	-	-	176.54	-	-
CMBC-EA-FLEX Traded Quantity [MWh]	January 10	January 11	January 12	January 13	January 14
	-	-	219,000	-	-
CMBC-EA-FLEX Traded Quantity [MWh]	January 03	January 04	January 05	January 06	January 07
	-	-	478,080	-	-

Note:  = Non working day

**Results**

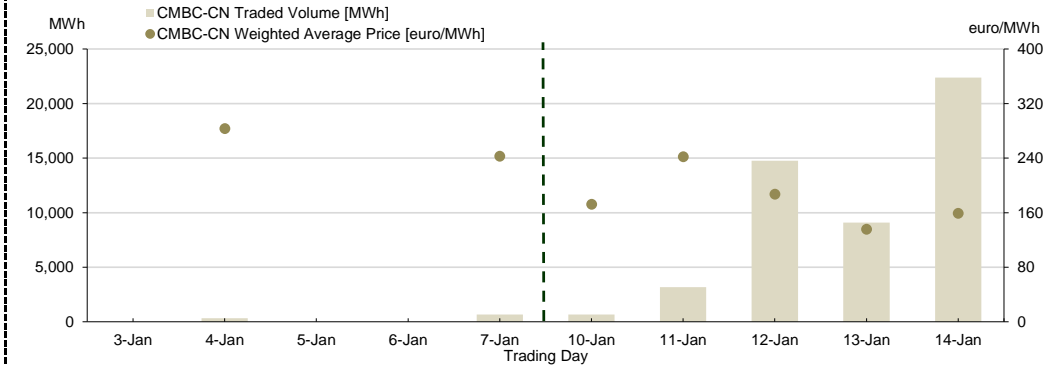


**Centralised Market for Electricity Bilateral Contracts  
Continuous Negotiation Mechanism**

CMBC-CN Weighted Average Price [euro/MWh]	January 10	January 11	January 12	January 13	January 14
	171.93	241.98	187.03	135.66	158.96
CMBC-CN Traded Quantity [MWh]	January 03	January 04	January 05	January 06	January 07
	-	283.03	-	-	242.74
CMBC-CN Traded Quantity [MWh]	January 10	January 11	January 12	January 13	January 14
	672	3,166	14,758	9,096	22,368
CMBC-CN Traded Quantity [MWh]	January 03	January 04	January 05	January 06	January 07
	-	320	-	-	672

Note:  = Non working day

**Results**

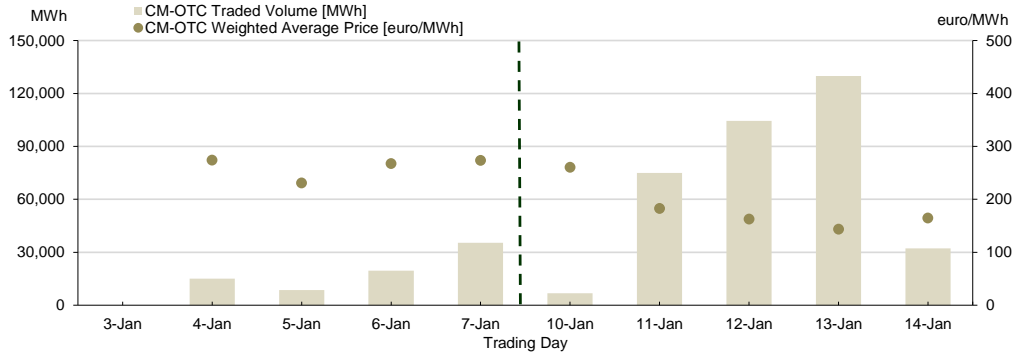


**Centralised Market with double continuous negotiation for Electricity Bilateral Contracts**

Results

CM-OTC Weighted Average Price [euro/MWh]	January 10	January 11	January 12	January 13	January 14
	260.84	182.69	162.71	143.74	164.57
CM-OTC Traded Quantity [MWh]	January 03	January 04	January 05	January 06	January 07
	-	274.27	230.83	267.64	273.91
CM-OTC Traded Quantity [MWh]	January 10	January 11	January 12	January 13	January 14
	6,744	74,925	104,520	129,960	32,256
CM-OTC Traded Quantity [MWh]	January 03	January 04	January 05	January 06	January 07
	-	15,120	8,640	19,608	35,400

Note:  = Non working day



**Centralised Market for Universal Service\***

Results

\* One trading session is conducted monthly on CMUS on the first Monday of a calendar month or the next business day if it is a public holiday.

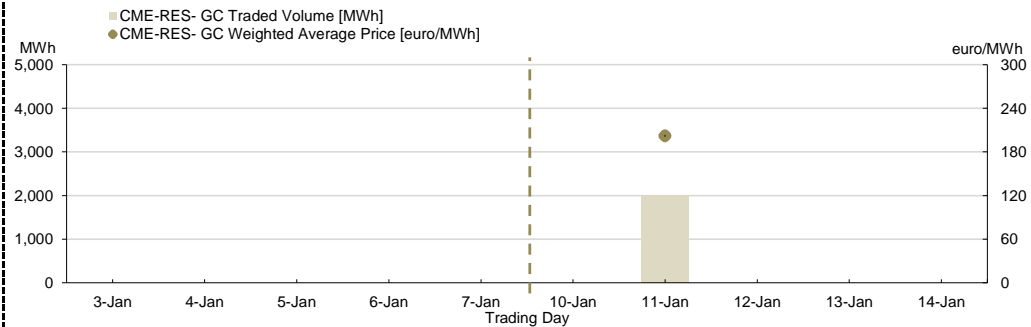
**Centralised market for electricity from renewable energy sources supported by green certificates - CME-RES- GC**

Results

CME-RES- GC Weighted Average Price [euro/MWh]	10 January	11 January	12 January	13 January	14 January
	-	202.22	-	-	-
CME-RES- GC Traded Quantity [MWh]	03 January	04 January	05 January	06 January	07 January
	-	-	-	-	-
CME-RES- GC Number** of Green Certificates Traded	10 January	11 January	12 January	13 January	14 January
	-	8,064	-	-	-
CME-RES- GC Number** of Green Certificates Traded	03 January	04 January	05 January	06 January	07 January
	-	-	-	-	-

Note:  = Non working day

\*\*The information concerning the number of traded GC will be reported to ANRE according to ANRE Order no 195/2019

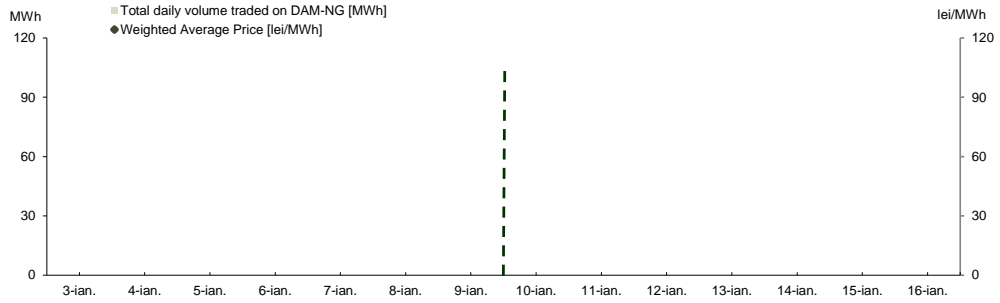


**Day Ahead Market for Natural Gas**

**Prices and Volumes**

Weighted Average Price [lei/MWh]	January 10	January 11	January 12	January 13	January 14	January 15	January 16
	-	-	-	-	-	-	-
	January 03	January 04	January 05	January 06	January 07	January 08	January 09
	-	-	-	-	-	-	-
Total daily volume traded on DAM-NG [MWh]	January 10	January 11	January 12	January 13	January 14	January 15	January 16
	-	-	-	-	-	-	-
	January 03	January 04	January 05	January 06	January 07	January 08	January 09
	-	-	-	-	-	-	-

Results



**Trends**

Results	Week 10.01.2022 - 16.01.2022	Trend related to week 03.01.2022 - 09.01.2022
Weighted Average Price [lei/MWh]	-	-
Total volume traded on DAM-NG [MWh]:	-	-

**Centralised Market for Natural Gas  
Trading Mechanism PCGN-LN**

Weighted Average Price [lei/MWh]	January 10	January 11	January 12	January 13	January 14
	-	-	-	-	-
	January 03	January 04	January 05	January 06	January 07
	-	-	-	-	-
PCGN-LN Traded Quantity [MWh]	January 10	January 11	January 12	January 13	January 14
	-	-	-	-	-
	January 03	January 04	January 05	January 06	January 07
	-	-	-	-	-

Note:  = Non working day

Results

