



Ghidul de utilizare pentru accesarea
Notelor de Informare pentru Decontare conform
Ordin ANRE nr. 31/2018

Accesare rapoarte specifice Pietei de Echilibrare incepand cu
1 septembrie 2018

In conformitate cu Ord. ANRE nr. 31/2018 au fost adaugate noi tipuri de decontare valabile incepand cu 1 septembrie 2018 care au fost adaugate vechilor functionalitati dupa cum urmeaza:

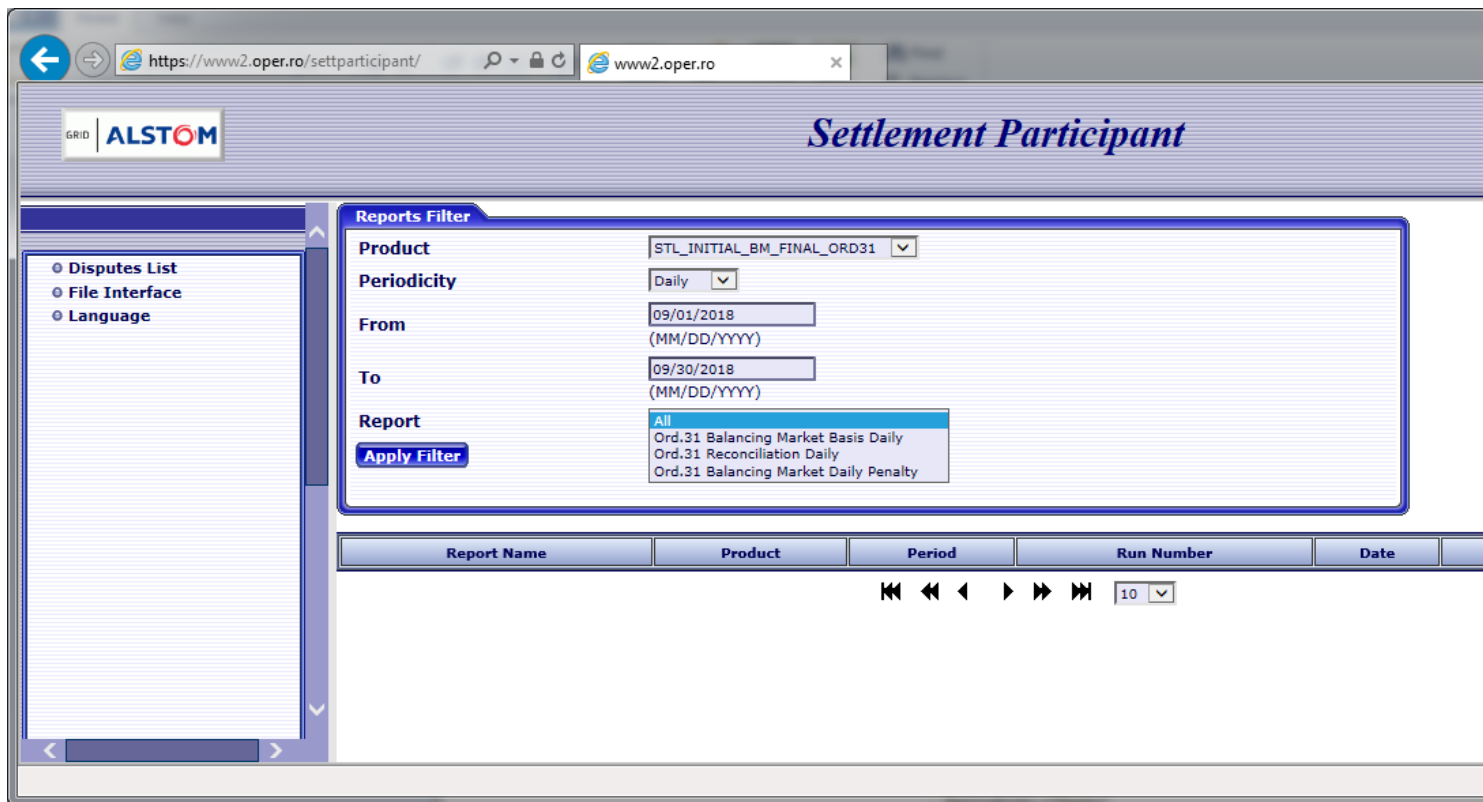
1. Rapoarte noi pentru decontare zilnica pe piata de echilibrare.

1.1. Rapoarte noi privind tranzactiile zilnice pe piata de echilibrare accesibile astfel:

- se selecteaza File Interface si se completeaza Reports Filter de sus in jos
- Product=" STL_INITIAL_BM_FINAL_ORD31 "
- Periodicity ="Daily"
- From ex. : 09/01/2018
- To ex: 09/30/2018 (una sau mai multe zile)
- Report: Se poate selecta "Ord31 Balancing Market Basis Daily" pentru tranzactii sau "Ord 31 Balancing Market Daily Penalty" pentru penalizari pentru livrarea partiala a energiei de echilibrare.



Exemplu de completare corecta:



Se apasa butonul Apply filter, apoi se pot vizualiza/descarca rapoartele dorite.

1.2. Rapoarte noi privind dezechilibrele zilnice de la notificare, accesibile astfel:

- se selecteaza File Interface si se completeaza Reports Filter de sus in jos
- Product=" STL_INITIAL_II_FINAL_ORD31 "
- Periodicity ="Daily"
- From ex. : 09/01/2018
- To ex: 09/30/2018 (una sau mai multe zile)
- Report: Se poate selecta "Ord31 IIMB Daily Detailed" pentru dezechilibrele de la notificare zilnice si orare pe unitatile participantului la PE sau "Ord 31 IIMB Daily" pentru dezechilibrele de lanotificare zilnice si orare pe participant.



Exemplu de completare corecta:

The screenshot shows a web browser window with the URL <https://www2.oper.ro/settparticipant/>. The page header includes the ALSTOM logo and the title "Settlement Participant". On the left, there is a navigation menu with options: Disputes List, File Interface, and Language. The main content area features a "Reports Filter" form with the following fields:

- Product: STL_INITIAL_II_FINAL_ORD31
- Periodicity: Daily
- From: 09/01/2018 (MM/DD/YYYY)
- To: 09/30/2018 (MM/DD/YYYY)
- Report: All (with a dropdown menu showing "Ord.31 IIMB Daily Detailed" and "Ord.31 IIMB Daily")

Below the form is an "Apply Filter" button. Underneath the filter is a table header with columns: Report Name, Product, Period, Run Number, and Date. Below the header, there are navigation icons and a page number "10".

Se apasa butonul Apply filter, apoi se pot vizualiza/descarca rapoartele dorite.

2. Rapoarte noi pentru decontare lunara pe piata de echilibrare.

2.1. Rapoarte noi privind tranzactiile lunare pe piata de echilibrare accesibile astfel:

- se selecteaza File Interface si se completeaza Reports Filter de sus in jos
- Product=" BIL_INITIAL_BM_FINAL_ORD31 "
- Periodicity ="Monthly"
- From ex. : 09/01/2018
- To ex: 09/30/2018
- Report: Se poate selecta "Ord31 Balancing Market Basis Monthly" pentru tranzactii lunare sau "Ord 31 Balancing Market Monthly Penalty" pentru penalizari lunare pentru livrarea partiala a energiei de echilibrare.



Exemplu de completare corecta:

The screenshot shows a web browser window with the URL <https://www2.oper.ro/settparticipant/>. The page title is "Settlement Participant". On the left, there is a navigation menu with options: Disputes List, File Interface, and Language. The main content area is titled "Reports Filter" and contains the following fields:

- Product: BIL_INITIAL_BM_FINAL_ORD31
- Periodicity: Monthly
- From: 09/01/2018 (MM/DD/YYYY)
- To: 09/30/2018 (MM/DD/YYYY)
- Report: A dropdown menu is open, showing options: All, Ord.31 Balancing Market Monthly Penalty, Ord.31 Balancing Market TSO Monthly Penalty, Ord.31 Balancing Market Basis Monthly, Ord.31 Balancing Market TSO Monthly, and Ord.31 Reconciliation Monthly.

Below the filter fields is an "Apply Filter" button. At the bottom of the page, there is a table header with columns: Report Name, Product, Period, Run Number, and Date. Below the header, there are navigation controls including arrows and a page number "10".

Se apasa butonul Apply filter, apoi se pot vizualiza/descarca rapoartele dorite.

2.2. Rapoarte noi privind dezechilibrele lunare de la notificare, accesibile astfel:

- se selecteaza File Interface si se completeaza Reports Filter de sus in jos
 - Product=" BIL_INITIAL_II_FINAL_ORD31 "
 - Periodicity ="Monthly"
 - From ex. : 09/01/2018
 - To ex: 09/30/2018
 - Report: Se poate selecta doar "Ord31 IIMB Monthly" pentru dezechilibrele de la notificare de la notificare lunare pe participant.



Exemplu de completare corecta:

GRID | ALSTOM

Settlement Participant

Reports Filter

Product: BIL_INITIAL_II_FINAL_ORD31

Periodicity: Monthly

From: 09/01/2018 (MM/DD/YYYY)

To: 09/30/2018 (MM/DD/YYYY)

Report: All

Apply Filter

Report Name	Product	Period	Run Number	Date
-------------	---------	--------	------------	------

Navigation icons: ⏪ ⏩ ⏴ ⏵

Page number: 10

Se apasa butonul Apply filter, apoi se pot vizualiza/descarca rapoartele dorite.

3. Rapoarte noi pentru decontare zilnica pentru dezechilibrele PRE.

3.1. Rapoarte noi privind dezechilibrele zilnice ale PRE astfel:

- se selecteaza File Interface si se completeaza Reports Filter de sus in

jos

- Product=" STL_INITIAL_BRPI_FINAL_ORD31 "

- Periodicity ="Daily"

- From ex. : 09/01/2018

- To ex: 09/30/2018 (una sau mai multe zile)

- Report: Se poate selecta doar "Ord31 BRPI Daily" pentru dezechilibrele zilnice ale PRE.



Exemplu de completare
corecta:

https://www2.oper.ro/settparticipant/ www2.oper.ro

GRID ALSTOM Settlement Participant

Reports Filter

Product STL_INITIAL_BRPI_FINAL_ORD31

Periodicity Daily

From 09/01/2018 (MM/DD/YYYY)

To 09/30/2018 (MM/DD/YYYY)

Report All Ord.31 BRPI Daily

Apply Filter

Report Name	Product	Period	Run Number	D
-------------	---------	--------	------------	---

10

Se apasa butonul Apply filter, apoi se pot vizualiza/descarca rapoartele dorite.

4. Rapoarte noi pentru decontare lunara pentru dezechilibrele PRE.

4.1. Rapoarte noi privind dezechilibrele lunare ale PRE accesibile astfel:

- se selecteaza File Interface si se completeaza Reports Filter de sus in jos
- Product=" BIL_INITIAL_BRPI_FINAL_ORD31 "
- Periodicity ="Monthly"
- From ex. : 09/01/2018
- To ex: 09/30/2018
- Report: Se poate selecta doar "Ord31 BRPI Monthly" pentru dezechilibrele PRE.



Exemplu de completare corecta:

Report Name	Product	Period	Run Number	Date
-------------	---------	--------	------------	------

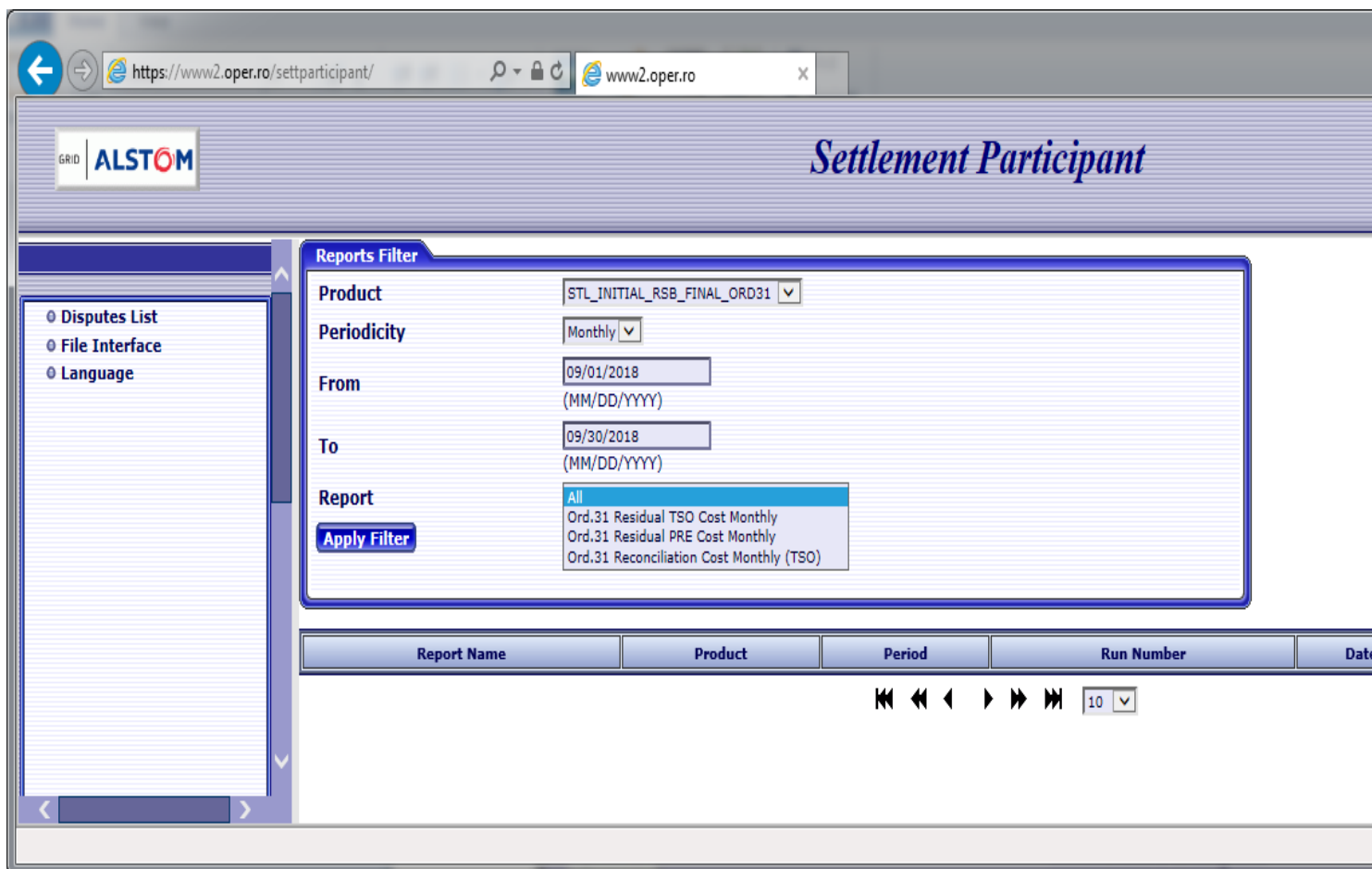
Se apasa butonul Apply filter, apoi se pot vizualiza/descarca rapoartele dorite.

4.2. Rapoarte noi privind redistribuirea veniturilor/costurilor din echilibrare, accesibile astfel:

- se selecteaza File Interface si se completeaza Reports Filter de sus in jos
 - Product=" STL_INITIAL_RSB_FINAL_ORD31 "
 - Periodicity ="Monthly"
 - From ex. : 09/01/2018
 - To ex: 09/30/2018
 - Report: Se poate selecta doar "Ord31 Residual PRE Cost Monthly" .



Exemplu de completare corecta:



Se apasa butonul Apply filter, apoi se pot vizualiza/descarca rapoartele dorite.